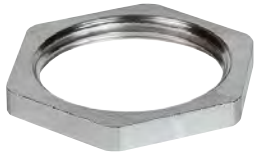




Locknuts



Locknuts (code: L)

The locknuts are used to hold the cable gland, adaptors or plugs up to the walls of the machinery.

Available materials

Nickel-plated brass (code: **ON**)

AISI316L Stainless steel (code: **S6**)

EXAMPLE CODE

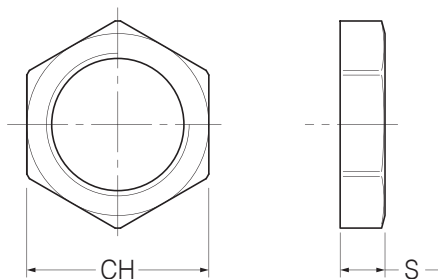
L. B75. ON

Locknuts code	Thread code	Material code
L.	B75.	ON

ON Nickel-plated brass

S6 AISI316L Stainless steel

TECHNICAL DRAWING



CODE	ISO 262	CH	S
L.I12._	M12x1,5	15	2,8
L.I16._	M16x1,5	19	2,8
L.I20._	M20x1,5	24	3
L.I25._	M25x1,5	30	3,5
L.I32._	M32x1,5	36	4
L.I40._	M40x1,5	46	4,5
L.I50._	M50x1,5	60	5
L.I63._	M63x1,5	70	5,5
L.I75._	M75x1,5	83	10
L.I90._	M90x2	102	10

CODE	ISO 228	CH	S
L.B12._	1/4"	15	3
L.B16._	3/8"	19	3
L.B20._	1/2"	24	3,5
L.B25._	3/4"	30	4
L.B32._	1"	37	4
L.B40._	1"1/4	45	4,5
L.B50._	1"1/2	52	5,5
L.B63._	2"	64	7
L.B75._	2"1/2	80	7
L.B90._	3"	95	8

CODE	DIN 40430	CH	S
L.P12._	Pg7	15	2,8
L.P16._	Pg9	18	2,8
L.P20._	Pg11	21	3
L.P25._	Pg13,5	23	3
L.P32._	Pg16	26	3
L.P40._	Pg21	32	3,5
L.P50._	Pg29	41	4
L.P63._	Pg36	51	5
L.P75._	Pg42	60	5
L.P90._	Pg48	64	5,5

CODE	NPT	CH	S
L.N12._	1/4"	16	3
L.N16._	3/8"	19	3
L.N20._	1/2"	24	3,5
L.N25._	3/4"	30	4
L.N32._	1"	37	4
L.N40._	1"1/4	46	5
L.N50._	1"1/2	55	5
L.N63._	2"	65	5
L.N75._	2"1/2	80	7
L.N90._	3"	95	7